



Golding Lodge, 45 Wellington Street  
Woolwich SE18

GARTONJONES.COM



# Golding Lodge, 45 Wellington Street Woolwich, SE18

GARTON JONES.COM

9 Albert  
Embankment  
London  
SE1 7SP

Lettings:  
+44 (0) 20 7735 1888  
nineelms@gartonjones.com  
www.gartonjones.com

## £370 Per Week

Situated within a modern development just moments from all the local shops and restaurants is this contemporary 1 double bedroom apartment of 582sq.ft (54sq.m), Golding Lodge is a popular residential development a short walk from Woolwich station. This well-presented property offers stylish living space with an integrated kitchen, a good-sized open plan reception room opening onto a generous balcony, double bedroom with fitted wardrobes, wood flooring, good storage, and a luxury bathroom suite. This property with its prime location benefits from easy access into the city with Woolwich Station offering the new Elizabeth Line providing quick transport across London.

Greenwich Council Tax Band C - £1,637.60 per annum

12 Month Minimum Term

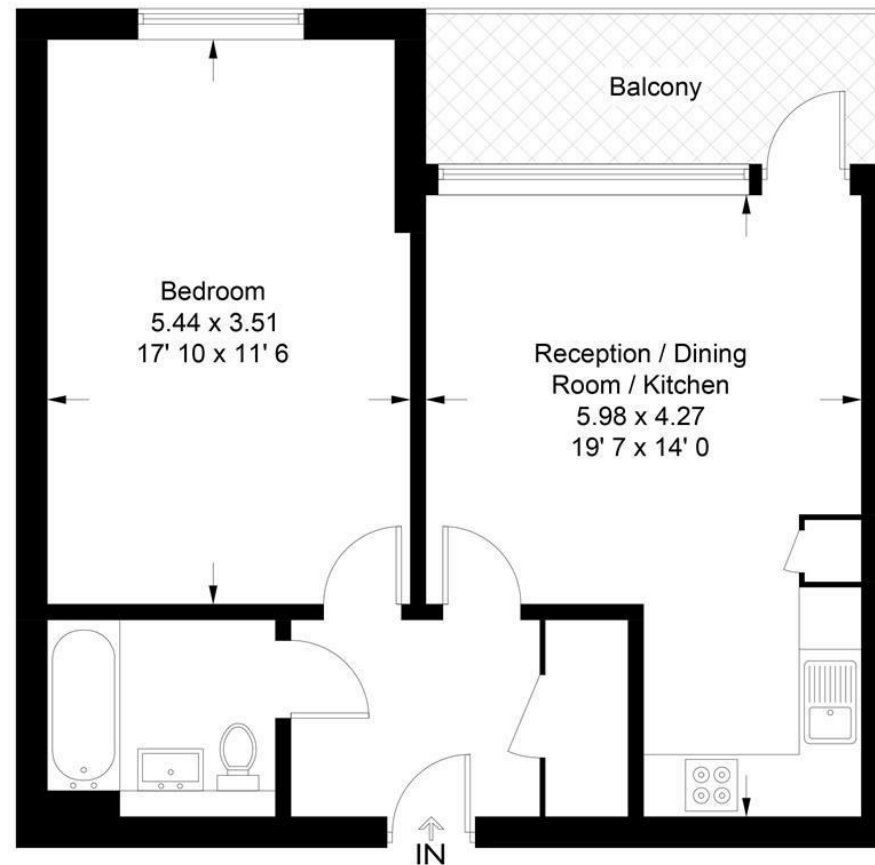
5 Week Security Deposit

- 582sq.ft (54sq.m)
- 1 Bedroom
- Bathroom
- Lift
- Open Plan Reception Room
- Modern Kitchen
- East Facing Aspect
- Central Location Close to Shops, Bars & Restaurants
- Short Walk from Woolwich Station with access to Elizabeth Line



# Golding Lodge

Approximate Gross Internal Area = 582 sq ft / 54.1 sq m



Not to scale, for guidance only and must not be relied upon as a statement of fact  
All measurements and areas are approximate only and have been prepared in accordance with the current edition of the RICS Code of Measuring Practice



